

THE LONDON RESORT

The London Resort Development Consent Order

BC080001

Environmental Statement Volume 3: Figures

Figure 12.30 Site Location Plan and Core Count Zones for Low and High Tide Surveys

Document reference: 6.3.12.30

Revision: 00

December 2020

Planning Act 2008

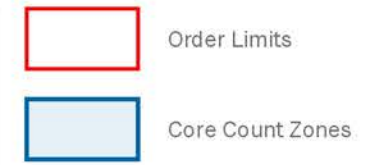
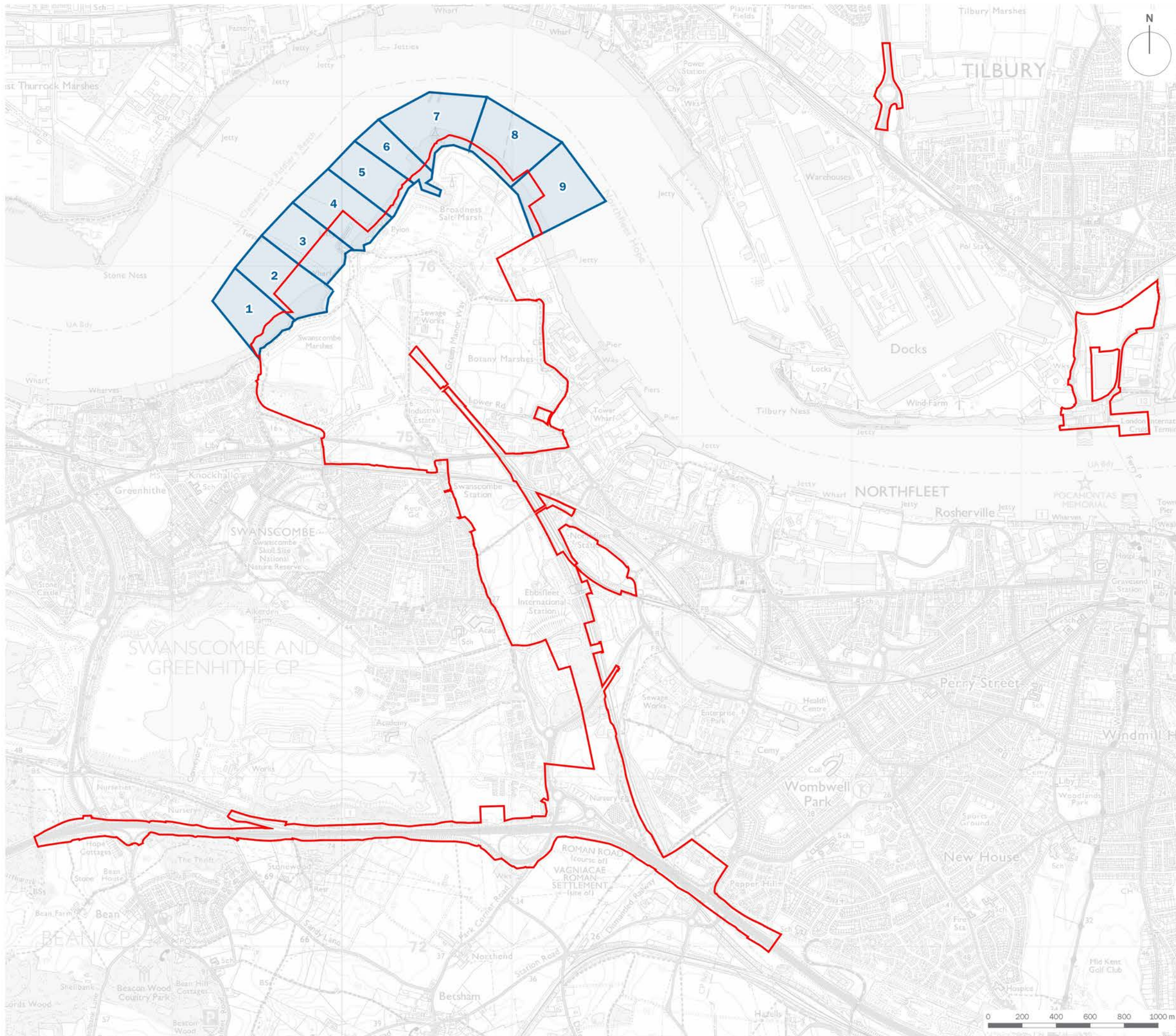
The Infrastructure Planning (Applications: Prescribed Forms and Procedure) Regulations 2009

Regulation 5(2)(a)

The Infrastructure Planning (Environmental Impact Assessment) Regulations 2017

Regulation 12(1)

[This page is intentionally left blank]



client	London Resort Company Holdings Limited	
project title	The London Resort	
drawing title	Figure 12.30: Site Location Plan and Core Count Zones for Low Tide and Hide Tide Surveys	
date	17 DECEMBER 2020	drawn by GY
drawing number	edp5988_d018d	checked EWA
scale	1:22,000 @ A3	QA JTF



Registered office: 01285 740427 - www.edp-uk.co.uk - info@edp-uk.co.uk